

EnviroBind

EnviroBind is a renewable resource based one-component moisture cured polyurethane adhesive.

Basic Uses

EnviroBind is intended for bonding many substrates to the backing material of synthetic grass, during the splicing process on putting greens, athletic fields, playgrounds, and other sporting applications.

Safety Guidelines

Always wear the recommended personal protective equipment. Avoid contact with eyes, skin, and clothing. Adequate ventilation is required during the application process. Refer to the SDS for further handling and safety instructions.

Storage and Packaging

EnviroBind should be kept dry and cool in original packaging. Do not expose containers to open flame, excessive heat, or direct sunlight. EnviroBind is packaged at 18 kg (approximately 4.2 gallons).

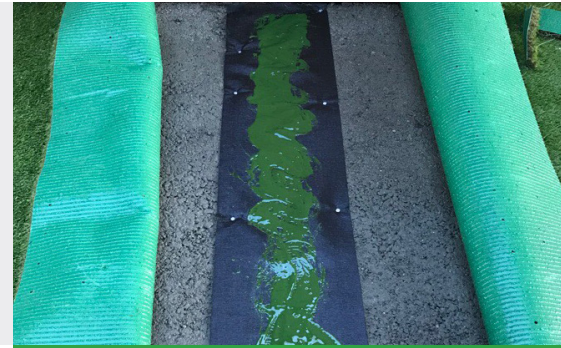
Coverage

The consumption rate is 55-65 sqft gallon (6" spread width x 1/16" thick)

Installation Guidelines

Note: Make sure adhesive and surface are at 45°F (7°C) or above for 48 hours before, during, and 48 hours after installation.

Before application, the surface must be sound, smooth, dry, clean, and free of excessive moisture or alkali. Remove dirt, wax, loose paint, and all other foreign matter that would interfere with a good bond such as curing agents and sealers.



Features & Benefits

- ✓ Non-Foaming
- ✓ Non-Flammable
- ✓ Eco Friendly
- ✓ 58% Renewable Resources
- ✓ 22% Soybean Oil
- ✓ Zero VOC
- ✓ One Component
- ✓ Excellent adhesion to various substrates



18 kgs

Installation

1. Layout seam tape
2. Pour a thin layer on the seam tape. Applying a continuous bed of about 1/16" thick and 6" wide, approximately 3" per side to be glued.
3. Mist with water using an airless sprayer
4. After application to the substrate or seam tape, wait 15-25 minutes for adhesive to absorb surface and atmospheric moisture, and then lay down the turf. Longer wait times are required under drier conditions.
5. Once small bubbles start to develop on the surface of the adhesive, press the turf firmly, applying enough pressure to ensure full contact between glue and turf.
6. Wait 5 minutes - DO NOT lift the turf as lifting will cause delamination of the glue and turf
7. After 10-15 additional minutes, press the seams ensuring contact between both surfaces - a weighted roller may be used for field applications.
8. Begin brooming and infilling after 2-3 hours, when the adhesive has hardened to the touch.
9. Adhesive will be completely cured in 24 hours. EnviroBind is a moisture cured adhesive, so humidity in the air, substrate, and turf backing will affect the outcome of the bonding and extreme temperature variations will affect the curing process.

Limitations

- Do not apply over wet substrates
- Substrate and application minimum temperature: 45°F (7°C)
- Substrate and application maximum temperature: 104°F (40°C)

Technical Data

Results based on temperature of 73°F (23°C) and 50% humidity

VOC	0 g/L*
Renewable Content	58%
Soybean Content	22%
Specific Gravity	1.00 - 1.10 g/cm ³
Viscosity	10,000 - 14,000 cps
Color	Green
Pot Life	20 - 40 minutes

*based on Standard formula calculation

Above figures are guide values and should not be used as a base for specifications