



## TurfGlue 2K

TurfGlue is a 2-component, thixotropic, polyurethane based turf adhesive.

### Basic Uses

TurfGlue 2K is designed to adhere turf to the substrate.

### Safety Guidelines

Always wear the recommended personal protective equipment. Avoid contact with eyes, skin, and clothing. Adequate ventilation is required during the application process.

### Storage and Packaging

TurfGlue 2K should be kept dry and cool. Storage temperatures should be between 4°C (40°F) and 32°C (90°F). Product shelf life is 1 year in original sealed container. TurfGlue is packaged in 20 kg kits (approximately 4.0 gallons) and 1 gallon sizes.

### Coverage

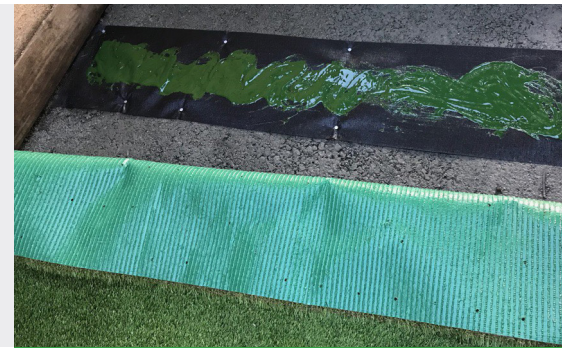
The standard consumption rate is 2.2 - 2.7 lb/yd<sup>2</sup> (1.2 - 1.5 kg/m<sup>2</sup>).

### Installation Guidelines

The surface to be coated must be clean, dry, and free of oil, grease, dirt, and any foreign residue. Pour Part B into Part A and power mix for at least 5 minutes prior to application. In order to obtain uniform coverage, TurfGlue 2K should be applied with a notched trowel.

### Limitations

- Do not apply over wet or damp substrates
- Substrate and application minimum temperature: 10°C (50°F)
- Substrate and application maximum temperature: 40°C (104°F)
- Permissible relative humidity: 40 - 90%
- Sealed surfaces should be coated within 24 hours



### Features & Benefits

- ✓ Excellent adhesion results
- ✓ Easy to apply
- ✓ Good consumption rate



1 gallon

20 kgs

## Technical Data

Renewable Content		41.18%
Mixing Ratio by Weight (A:B)		4:1
Density	23°C (73°F)	1.26 - 1.32 g/cm <sup>3</sup>
Viscosity	23°C (73°F)	Thixotropic
Pot Life	23°C (73°F)	70 - 110 minutes

Above figures are guide values and should not be used as a base for specifications